



Overview

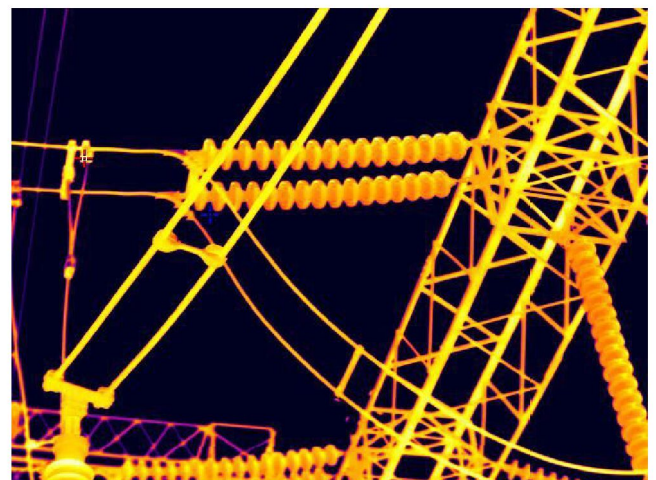
Behold **the highest class of thermal imagers** that offers temperature measurements of substantial accuracy. Robustly designed and constructed, they are ideally suited for:

- troubleshooting electrical installations, wiring, panels, motors, breakers, transformers, switchgear, and electrical equipment,
- monitoring the thermal performance of industrial manufacturing processes,
- identifying overheating of mechanical and electro-mechanical components,
- inspecting buildings for insulation leaks, energy audits, HVAC/R equipment, water damage, and pests,
- locating hidden heat sources (of people, animals, objects) in dark or low-light conditions.

The touchscreen as well as the lens swivel independently to view objects of interest that are difficult to access from any angle. The large number of functions, intuitive handling and excellent ergonomics make the KT-510/520/525/530/550 imagers perfect for **every advanced thermographer**.

Features

- Image files saved in JPG format (complete image data).
- Recording of IR videos (on SD memory card or computer hard disk).
- 64 GB Internal memory, 64 GB external (256 GB exp)
- MIF image combining mode.
- Extensive image analysis tools.
- Built-in camera for capturing images within the visible light spectrum.
- Built-in: GPS, Electronic compass, LED flashlight, laser pointer.
- Interfaces: USB type C, Wi-Fi, Ethernet, SD memory card slot, Bluetooth.
- 10x, 16x & 20x Digital zoom.
- Interchangeable lenses



Technical specification

Model	KT 510	KT 520	KT 525	KT 530	KT 550
Detector type	VOx, 7.5 to 14μm				
Infrared resolution	256×192@12μm	320×240@12μm	384×288@12μm	480×360@12μm	640×480@12μm
Super resolution	Yes, Upgrade to 512×384	Yes, Upgrade to 640×480	Yes, Upgrade to 768×576	Yes, Upgrade to 960×720	Yes, Upgrade to 1280×960
NETD	≤45 mK				≤40 mK
Frame rate	30 Hz / 9 Hz				
Field of view	25°×19°				
IFOV	1.70mrad	1.36mrad	1.13mrad	0.91mrad	0.68mrad
Min. object distance	0.1m		0.15m		
Focusing mode	Manual / Automatic / Touch autofocus / Continuous autofocus				
Digital zoom	1.1x to 8x		1.1x to 10x	1.1x to 16x	1.1x to 20x
Shot recognition	Auto				
Measurement range	Support auto-switching: -40°C to 150°C, 0°C to 650°C	Support auto-switching: -40°C to 150°C, 0°C to 650°C, Optional 500°C to 2000°C (High temperature lens is required)			
Measurement accuracy	±2°C or ±2%, whichever is greater				
Parameter settings	Emissivity, reflected temperature, target distance, humidity, atmospheric transmittance, optical transmittance, dew point				
Others	Isothermals, Smart Stroke, Intelligently calculate the area				
Display screen	4.3", 800×480 pixel touchscreen LCD				
Digital camera	5 MP		8 MP		13 MP
Image mode	IR, VIS, MIF, PIP				
Image adjustment	Level span mode: Automatic, Semi-automatic, Manual				
Color palettes	15				
Recording function	Photo and Video (infrared & visible light)		Photo (image stitching) and Video (infrared & visible light)		
Storage media	Local storage (64 GB) and external SD card (64 GB and up to 256 GB)				
Image storage	JPG with temp info				
Video storage	MP4 format (without temp info) can be used to record audio synchronously; Irgd (with temp info), up to 30 Hz (optional) for temperature analysis				
External interface	Type-C, SD card slot, UNC ¼"-20 (Tripod mounting)				
WIFI	Yes, it can be connected to the mobile terminal for image and real-time video transmission				
Bluetooth	Bluetooth 5.0, support image transmission (only for Android)				
Battery type	Lithium-ion rechargeable battery				
Operating time	≥5 hours			≥4 hours	
Charging mode	TYPE-C charging; PC/portable charger; Capable of charging while using				
Charging time	90% of full charge in 2.5 hours				
Working temperature	-20°C to 50°C				
Storage temperature	-40°C to 60°C				
IP rating	IP54				
Drop	2m drop test				
Weight	≤1.15kg (with battery)		≤1.15KG (with battery)		≤1.15kg (with battery)
Size	292×125×125 mm				

Standard accessories

Li-Ion rechargeable battery-2 No's

Type-C USB cable for data transfer, Type C to RJ45, Ethernet cable

Wristband

SD card

Power supply (USB) for battery charging

Carrying case

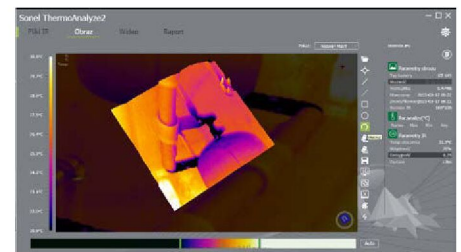
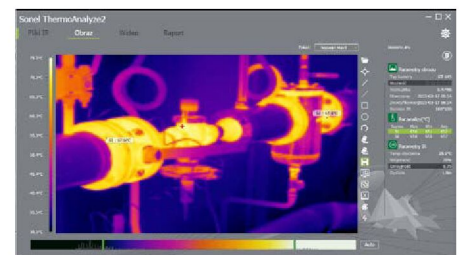
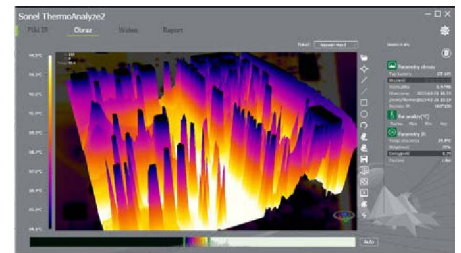
User manual

Factory calibration certificate

Sonel ThermoAnalyze

A programme for analysing and reporting, included in the set of thermal imaging cameras.

- the possibility of adjusting the emissivity coefficient for the entire thermogram or its parts – the coefficient may be adjusted separately for each selected area;
- the selection of the analysed areas – marking out a rectangular or oval area, or one of any other shape;
- the temperature readout at any point – after moving the cursor, the temperature readout and current coordinates are presented continuously in the “Information” box; other recorded data are also available (maximum temperature, humidity, emissivity);
- the use of InfraFusion technology – a thermogram in any palette chosen by the user is superimposed on any part of the visual picture. The thermogram is superimposed with a set transparency, thus enabling the optimal presentation and the marking of areas of interest, especially when the visual comparison of the thermogram area and the details of the visual image of the observed object is difficult;
- the determination and readout of the minimum, maximum and mean temperature for the whole area or in each selected area; Segment selection (straight line or polyline);
- easy report writing by transferring to the report everything which you want to include – thermograms and corresponding visual pictures;
- saving all characteristic points and corrections made, allowing for further analysis at a later time;
- unlimited software licence – the programme can be used on many computers simultaneously.



Sonel KT Mobile



Mobile version of the programme supporting Sonel thermal imaging cameras. This application enables the user to view images in real time on a mobile phone and to remotely perform many other activities by managing the camera from a mobile device.